



Inseparably

Linked

A close-up photograph of two hands holding two interlocking puzzle pieces. The puzzle pieces are a warm, reddish-orange color. The hands are positioned on the left and right sides of the frame, with fingers gripping the edges of the pieces. The background is a soft, out-of-focus light yellow or cream color. In the top right corner, there is a dark grey rectangular box containing the text 'John 17:6-10' in a white, elegant script font. In the bottom right corner, there is a dark grey oval shape containing the text 'Inseparably Linked' in a light blue and white script font.

John 17:6-10

*Inseparably
Linked*

I have revealed
your name to the
people you gave
me from this
world. They were
yours and you
gave them to me,
and they have kept
your word.

A close-up photograph of a hand placing a single puzzle piece into a larger assembly. The puzzle pieces are a warm, reddish-brown color. The background is a soft, out-of-focus yellow and white, suggesting a bright, sunny environment. The lighting creates a strong shadow of the hand and the puzzle piece on the surface below.

*Inseparably
Linked*

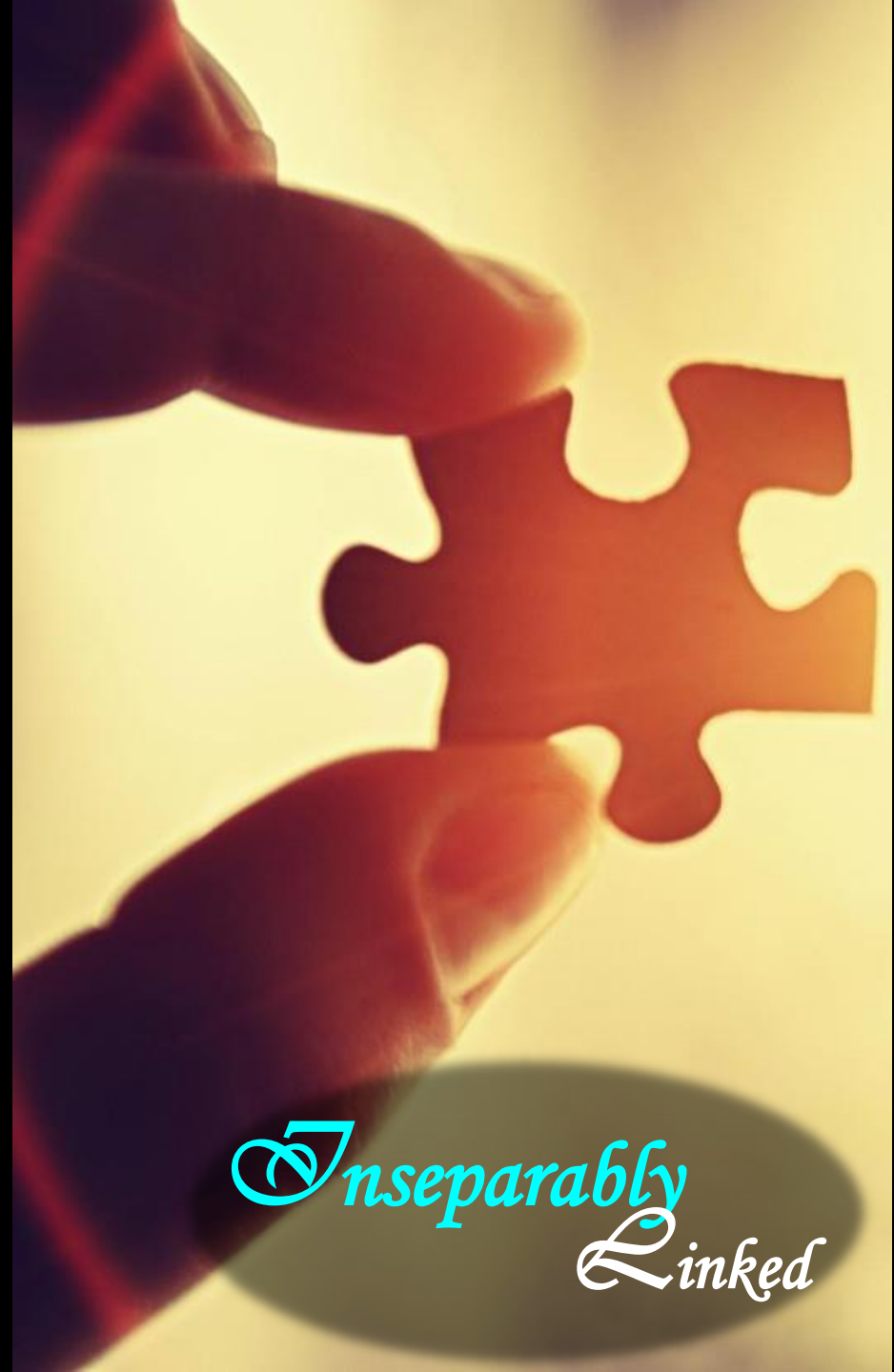


*Inseparably
Linked*

Now they know
that everything
you have given
me comes from
you.

This is because I gave them the words that you gave me, and they received them.

They truly understood that I came from you, and they believed that you sent me.



*Inseparably
Linked*



*Inseparably
Linked*

I'm praying for them. I'm not praying for the world but for those you gave me, because they are yours.

Everything that is
mine is yours and
everything that is
yours is mine; I
have been
glorified in them.

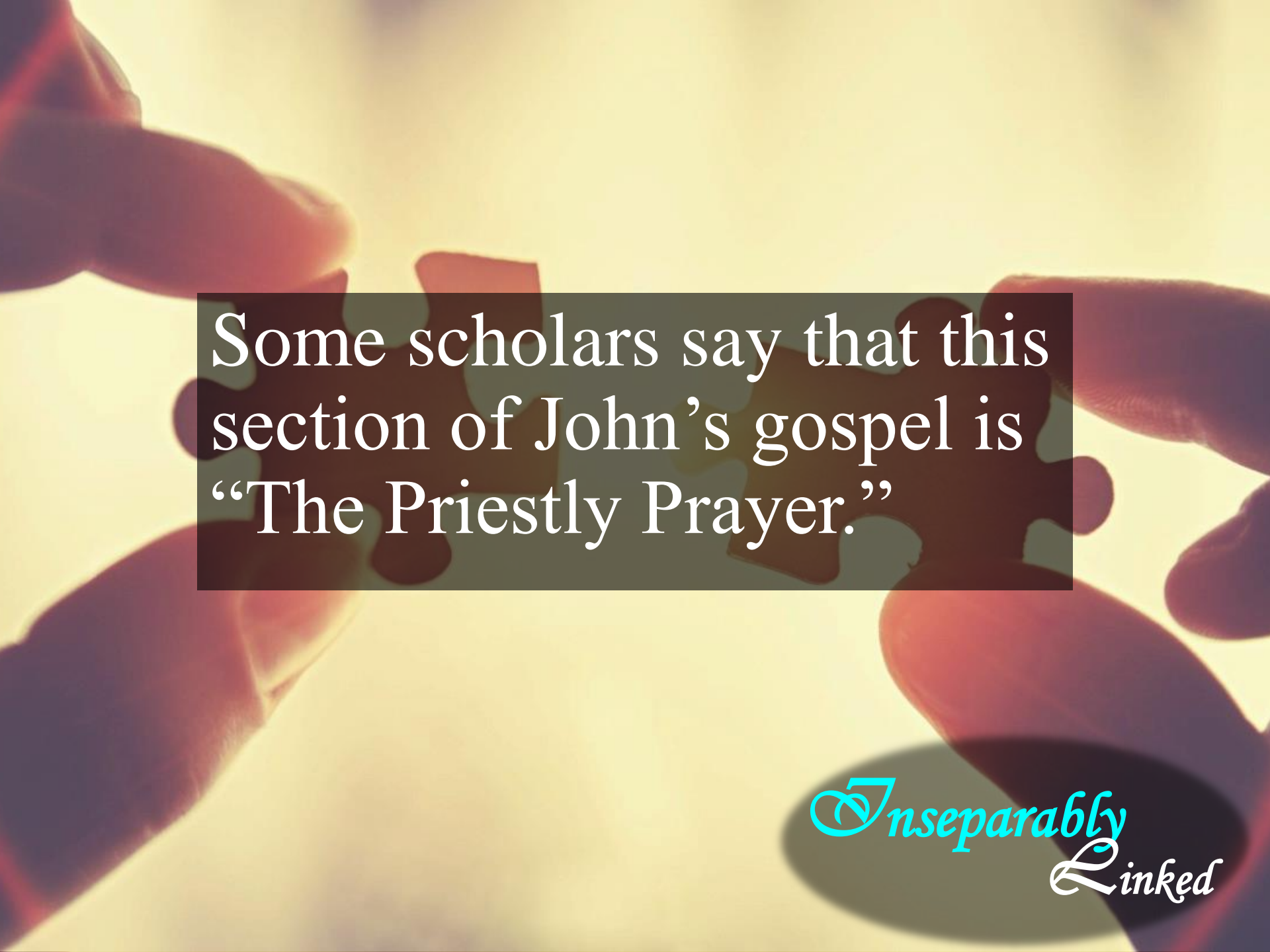
A close-up photograph of a hand holding a single puzzle piece. The hand is positioned on the left side of the frame, with fingers gripping the piece. The puzzle piece is a reddish-brown color and is being held up against a bright, warm, yellowish-gold background that has a soft, glowing effect. The lighting is dramatic, highlighting the texture of the hand and the shape of the puzzle piece.

*Inseparably
Linked*




Inseparably

Linked



Some scholars say that this section of John's gospel is "The Priestly Prayer."

*Inseparably
Linked*

A close-up photograph of two hands holding two interlocking puzzle pieces. The puzzle pieces are a warm, reddish-brown color. The hands are positioned on the left and right sides of the frame, with fingers gripping the edges of the pieces. The background is a soft, out-of-focus light yellow or cream color. A dark grey rectangular box is overlaid in the upper right quadrant, containing white text.

Let's look at some
more of the verses...

*Inseparably
Linked*

I have revealed
your name to the
people you gave
me from this
world. They were
yours and you
gave them to me,
and they have kept
your word.

A close-up photograph of a hand placing a single puzzle piece into a larger assembly. The puzzle pieces are a warm, reddish-orange color. The background is a soft, out-of-focus yellow and white, suggesting a bright, sunny environment. The lighting is dramatic, with strong highlights and deep shadows, emphasizing the texture of the puzzle pieces and the skin of the hand.

*Inseparably
Linked*

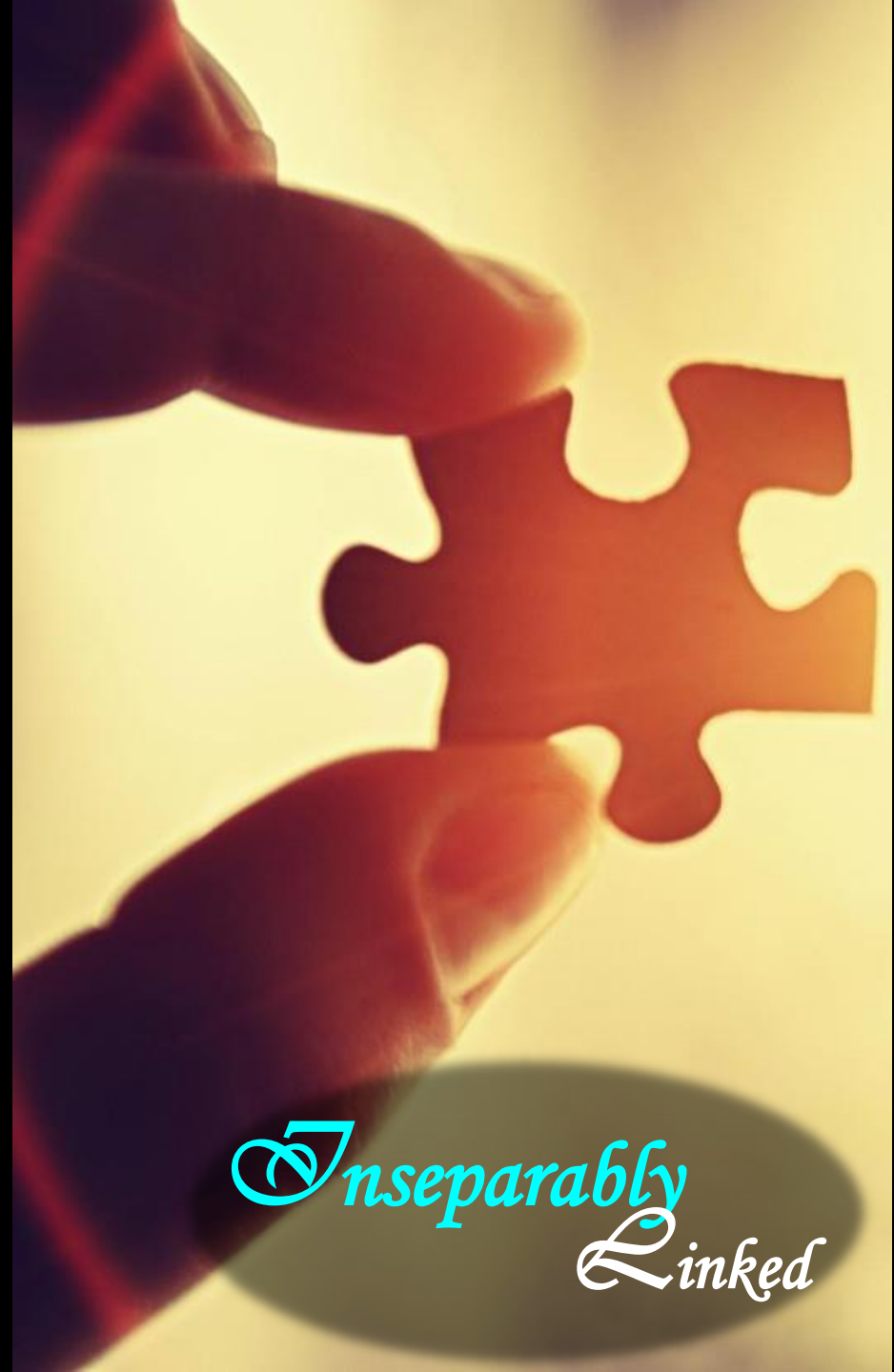


*Inseparably
Linked*

Now they know
that everything
you have given
me comes from
you.

This is because I gave them the words that you gave me, and they received them.

They truly understood that I came from you, and they believed that you sent me.



*Inseparably
Linked*



*Inseparably
Linked*

I'm praying for them. I'm not praying for the world but for those you gave me, because they are yours.

Everything that is
mine is yours and
everything that is
yours is mine; I
have been
glorified in them.

A close-up photograph of a hand holding a single puzzle piece. The hand is positioned in the upper left, with fingers gripping the piece. The puzzle piece is a reddish-brown color and is being held against a bright, warm, yellowish-gold background that has a soft, glowing effect. The lighting creates a sense of depth and focus on the puzzle piece.

*Inseparably
Linked*



*Inseparably
Linked*

I'm no longer in the world, but they are in the world, even as I'm coming to you. Holy Father, watch over them in your name, the name you gave me, that they will be one just as we are one.

When I was with
them, I watched
over them in your
name, the name you
gave to me, and I
kept them safe.

A close-up photograph of a hand holding a single puzzle piece. The hand is positioned in the upper left, with fingers gripping the piece. The puzzle piece is a reddish-brown color and is being held against a bright, warm, golden-yellow background. The lighting is soft and directional, creating a glow around the piece and casting a shadow on the surface below. The overall mood is one of care and connection.

*Inseparably
Linked*



*Inseparably
Linked*

None of them were lost, except the one who was destined for destruction, so that scripture would be fulfilled.

Now I'm coming
to you and I say
these things while
I'm in the world
so that they can
share completely
in my joy.

A close-up photograph of a hand holding a single puzzle piece. The hand is positioned on the left side of the frame, with fingers gently gripping the piece. The puzzle piece is a vibrant orange-red color and is being held up against a bright, warm, yellowish-gold background that has a soft, glowing effect. The lighting is dramatic, highlighting the texture of the hand and the shape of the puzzle piece.

*Inseparably
Linked*



*Inseparably
Linked*

I gave your word
to them and the
world hated them,
because they
don't belong to
this world, just as
I don't belong to
this world.

I'm not asking that you take them out of this world but that you keep them safe from the evil one.

A close-up photograph of a hand holding a single puzzle piece. The hand is positioned on the left side of the frame, with fingers gripping the piece. The puzzle piece is a standard interlocking shape, colored in a gradient of red and orange. The background is a soft, warm glow of yellow and orange, suggesting a sunset or a light source behind the hand. The overall mood is contemplative and focused.

*Inseparably
Linked*



*Inseparably
Linked*

They don't belong
to this world, just
as I don't belong to
this world.

Make them holy
in the truth; your
word is truth. As
you sent me into
the world, so I
have sent them
into the world.



*Inseparably
Linked*



*Inseparably
Linked*

I made myself
holy on their
behalf so that
they also would
be made holy in
the truth.

A close-up photograph of two hands holding two interlocking puzzle pieces. The puzzle pieces are a warm, reddish-brown color. The hands are positioned on the left and right sides of the frame, with fingers gripping the edges of the pieces. The background is a soft, out-of-focus light yellow or cream color. The overall mood is one of connection and problem-solving.

Why is this message entitled
“Inseparably Linked?”

*Inseparably
Linked*

I have revealed
your name to the
people you gave
me from this
world. They were
yours and you
gave them to me,
and they have kept
your word.

A close-up photograph of a hand placing a single puzzle piece into a larger assembly. The puzzle pieces are a warm, reddish-brown color. The background is a soft, out-of-focus yellow and orange gradient, suggesting a bright light source. The hand is positioned in the lower-left, with fingers gently holding the piece as it fits into the larger structure.

*Inseparably
Linked*



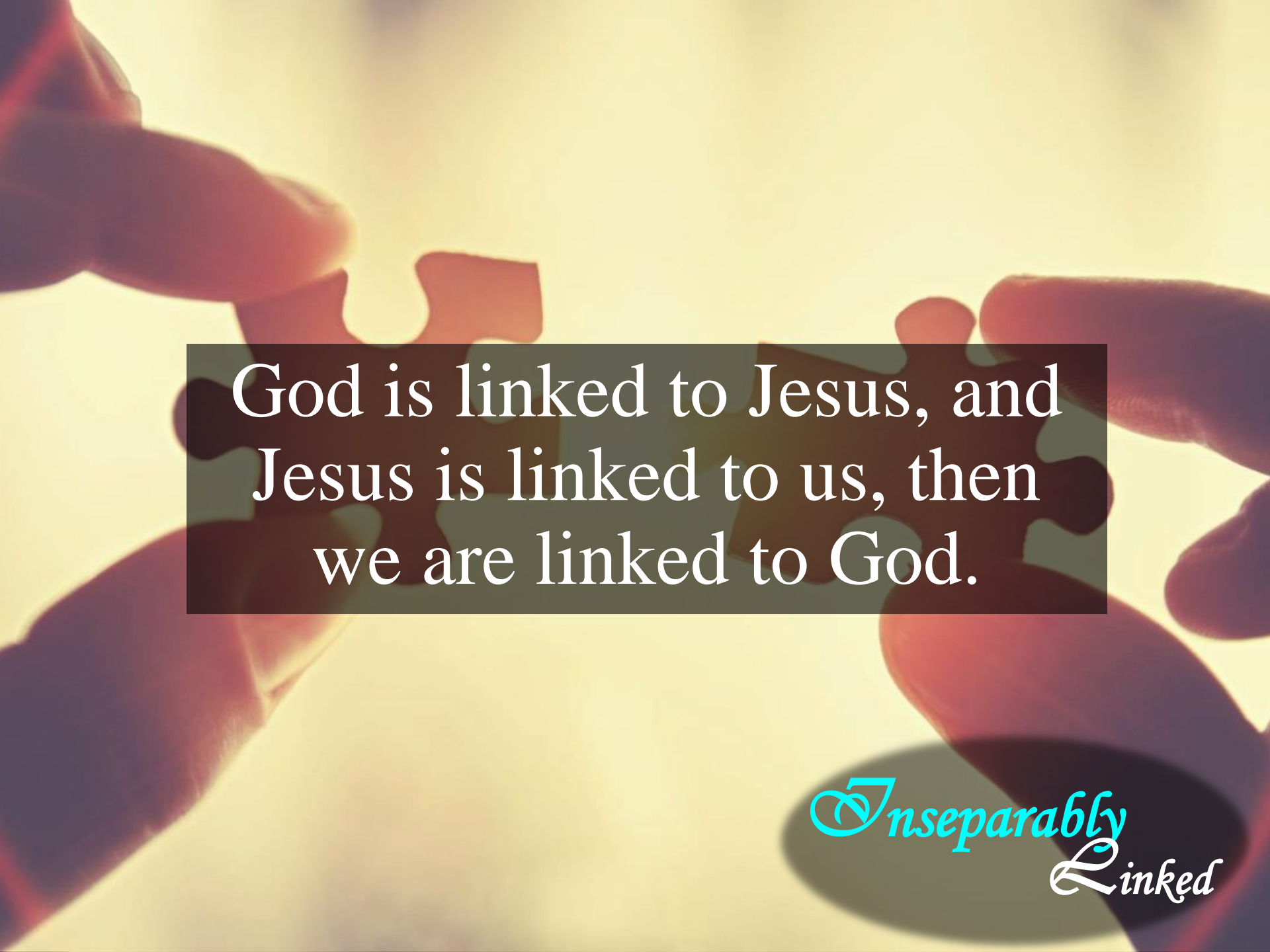
*Inseparably
Linked*

I'm praying for them. I'm not praying for the world but for those you gave me, because they are yours.

Everything that is
mine is yours and
everything that is
yours is mine; I
have been
glorified in them.

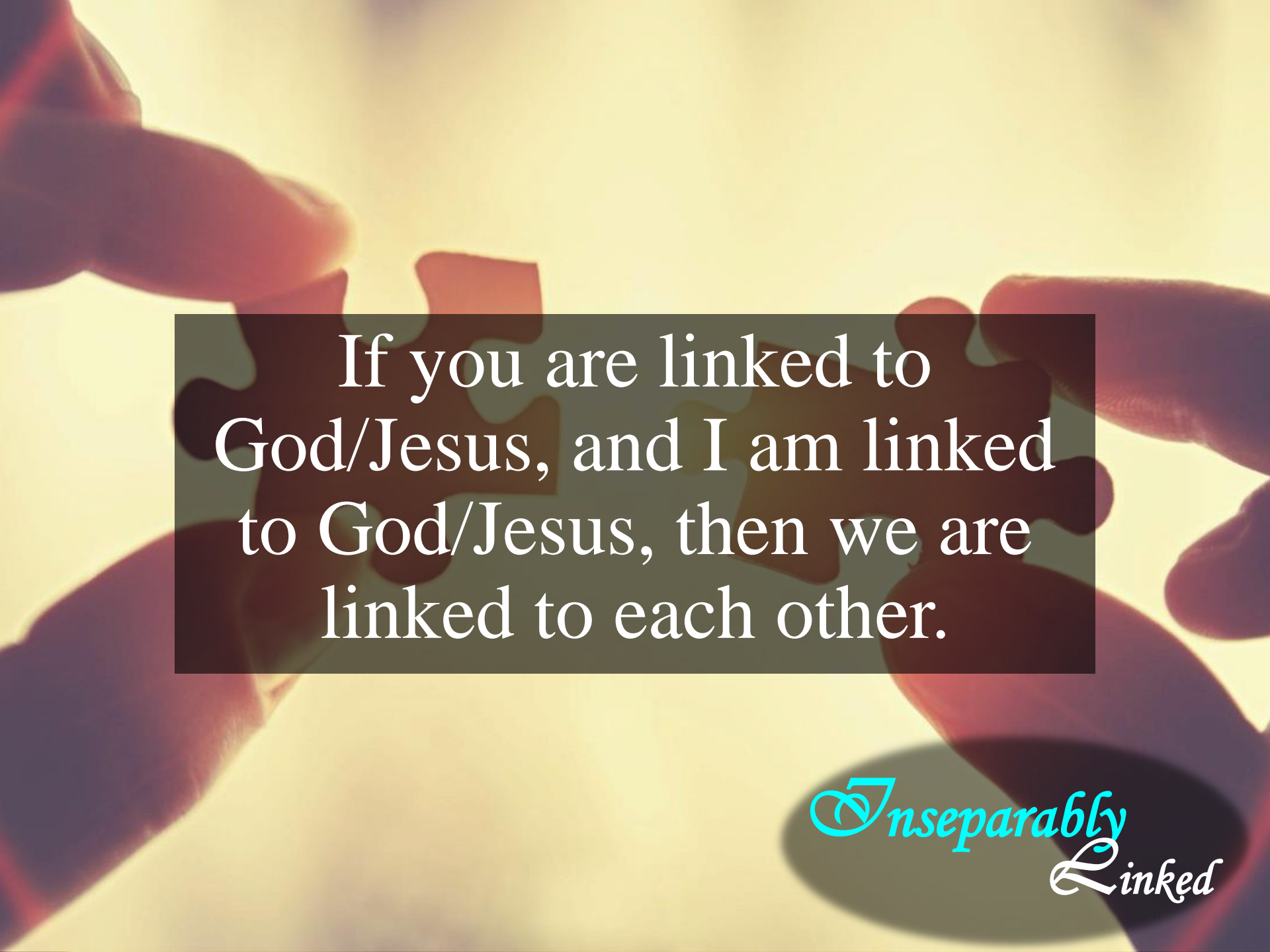
A close-up photograph of a hand holding a single puzzle piece. The hand is positioned on the left side of the frame, with fingers gently gripping the piece. The puzzle piece is a vibrant orange-red color and is being held up against a bright, warm, yellowish-gold background that has a soft, glowing effect. The lighting creates a sense of depth and focus on the puzzle piece.

*Inseparably
Linked*



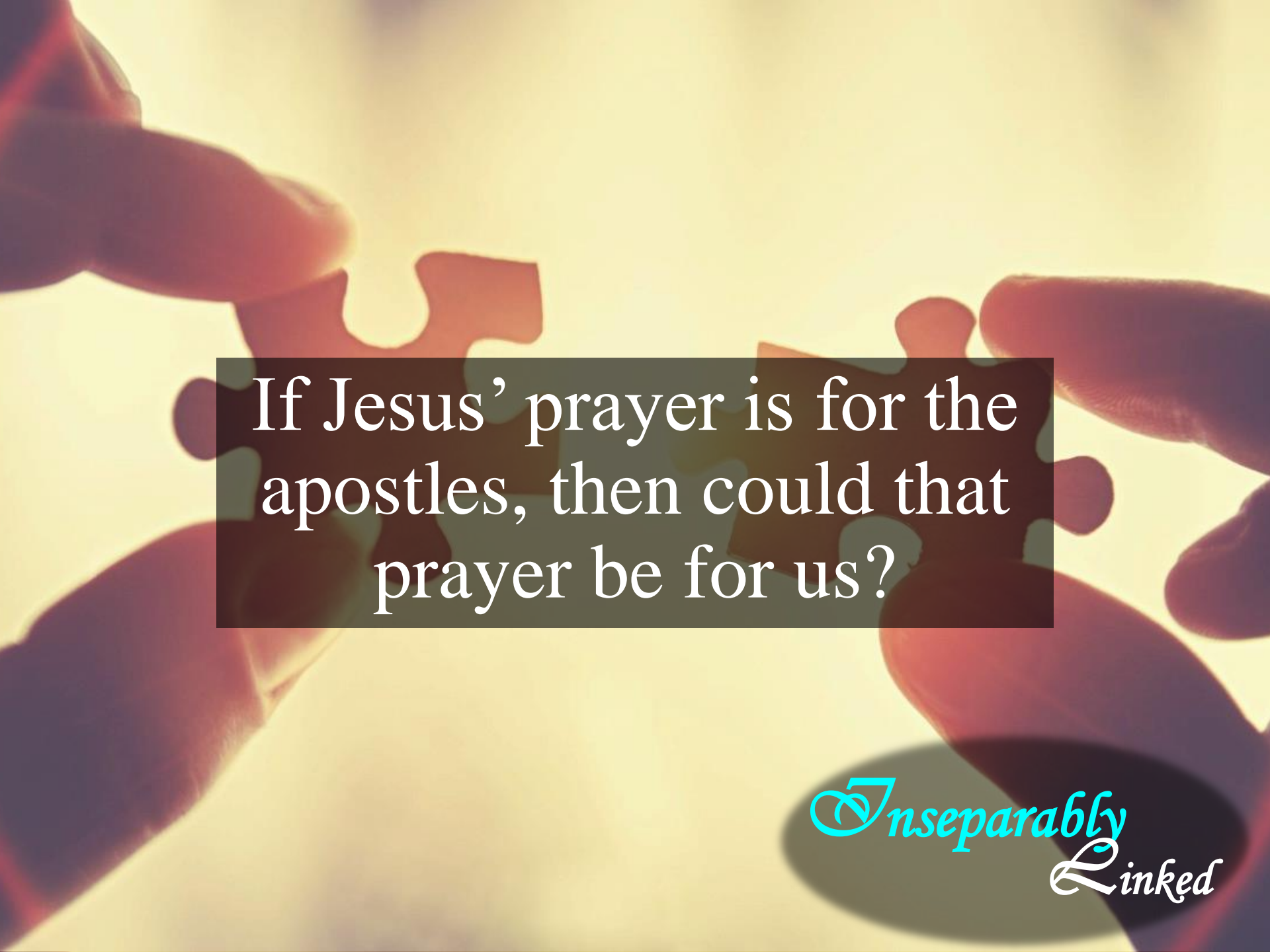
God is linked to Jesus, and
Jesus is linked to us, then
we are linked to God.

*Inseparably
Linked*




If you are linked to
God/Jesus, and I am linked
to God/Jesus, then we are
linked to each other.

*Inseparably
Linked*



If Jesus' prayer is for the apostles, then could that prayer be for us?

*Inseparably
Linked*

A close-up photograph of several hands holding together interlocking puzzle pieces. The background is a soft, warm yellow light, suggesting a sunrise or sunset. The hands are positioned around the puzzle pieces, with some fingers gripping the edges. The overall mood is one of unity and connection.

Actually, there is a
prayer for us inside the
Priestly Prayer.

*Inseparably
Linked*

“I’m not praying
only for them but
also for those who
believe in me
because of their
word.

A close-up photograph of a hand holding a single puzzle piece. The hand is positioned on the left side of the frame, with fingers gently gripping the piece. The puzzle piece is a vibrant orange-red color and is being held up against a bright, warm, yellowish-gold background that has a soft, glowing effect. The lighting creates a sense of depth and focus on the puzzle piece.

*Inseparably
Linked*



*Inseparably
Linked*

I pray they will be one, Father, just as you are in me and I am in you. I pray that they also will be in us, so that the world will believe that you sent me.

I'm in them and you
are in me so that
they will be made
perfectly one. Then
the world will know
that you sent me and
that you have loved
them just as you
loved me.

A close-up photograph of a hand placing a single puzzle piece into a larger assembly. The puzzle pieces are a warm, golden-brown color. The background is a soft, out-of-focus light yellow. The lighting is dramatic, highlighting the texture of the hand and the interlocking shapes of the puzzle pieces.

*Inseparably
Linked*



*Inseparably
Linked*

“Father, I want those you gave me to be with me where I am. Then they can see my glory, which you gave me because you loved me before the creation of the world.

“Righteous Father,
even the world
didn’t know you,
but I’ve known
you, and these
believers know
that you sent me.

A close-up photograph of a hand placing a single puzzle piece into a larger assembly. The puzzle pieces are a warm, reddish-brown color. The background is a soft, out-of-focus yellow and white, suggesting a bright, sunny environment. The lighting is dramatic, with strong highlights and deep shadows, emphasizing the texture of the hand and the puzzle pieces.

*Inseparably
Linked*



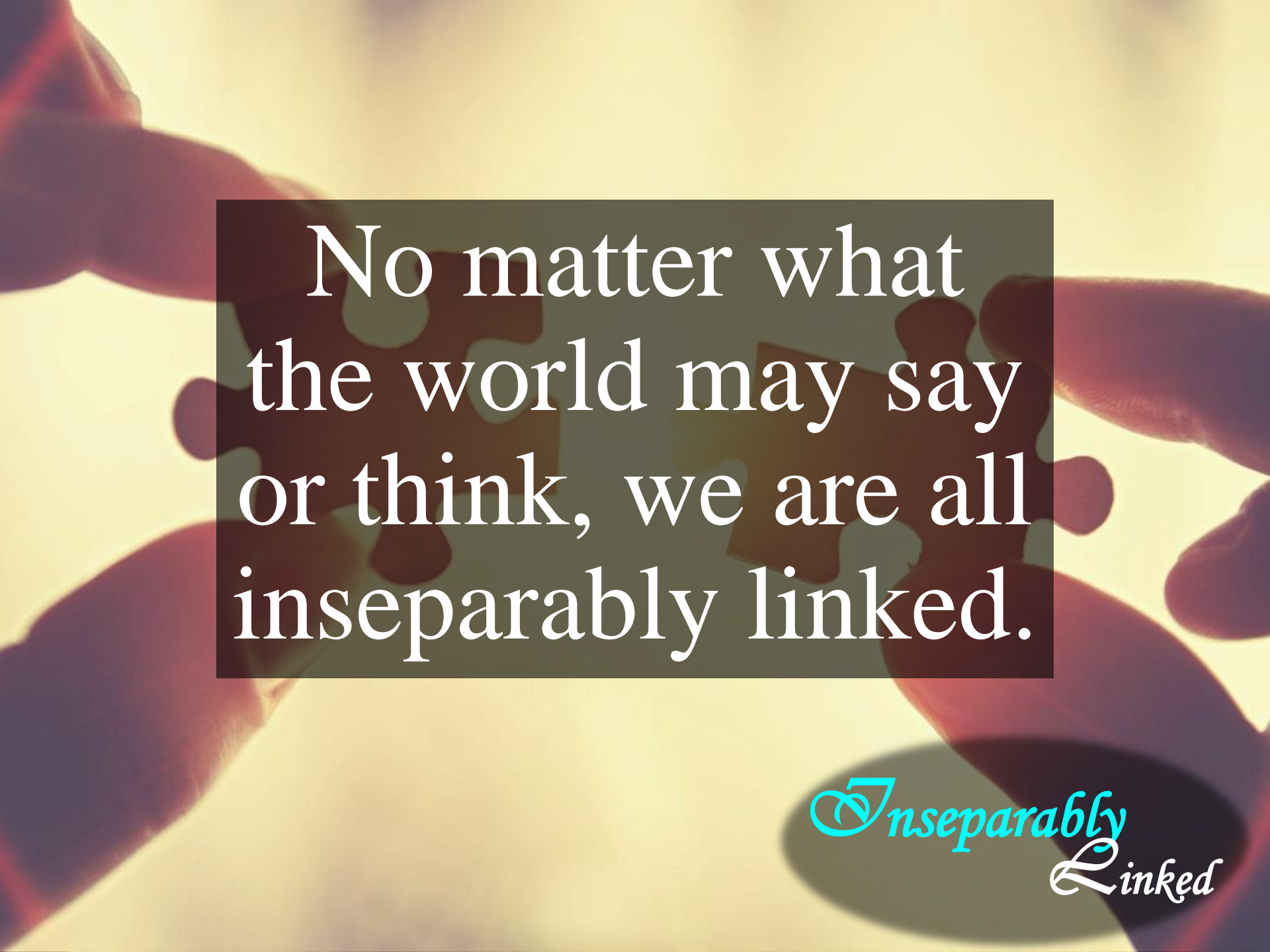
*Inseparably
Linked*

I've made your name known to them and will continue to make it known so that your love for me will be in them, and I myself will be in them."

A close-up photograph of two hands holding two interlocking puzzle pieces. The puzzle pieces are a warm, reddish-brown color. The background is a soft, out-of-focus light yellow. The hands are positioned on the left and right sides of the frame, with fingers gripping the edges of the puzzle pieces. The puzzle pieces are held together, forming a small section of a larger puzzle.

So What?

*Inseparably
Linked*

The background of the image shows several hands of different skin tones holding together interlocking puzzle pieces. The lighting is warm and golden, creating a sense of unity and connection. The puzzle pieces are dark, and the hands are positioned around them, some holding them from the sides and others from the top and bottom.

No matter what
the world may say
or think, we are all
inseparably linked.

*Inseparably
Linked*


A close-up photograph of two hands holding two interlocking puzzle pieces. The puzzle pieces are a warm, golden-brown color. The hands are positioned on the left and right sides of the frame, with fingers gripping the edges of the pieces. The background is a soft, out-of-focus light yellow, suggesting a bright, sunny environment. The overall mood is one of anticipation and connection.

Next Week...

*Inseparably
Linked*

A white feather is positioned horizontally across the center of the image. The background is dark with numerous out-of-focus light spots, creating a bokeh effect. The text is overlaid on a semi-transparent grey rectangular area that covers the feather.

*Breathe on Me,
Breath of God*



*And all of God's
people said, "Amen."*

*Inseparably
Linked*